

PHOTOGRAPHIC COMPETITION

'FOCUS ON FARMS'

HOSTED BY: GOMAREN & DOCTORS CREEK
CATCHMENT LANDCARE GROUP INC.

SUBMISSION DATE 31ST AUGUST 2016
PHOTO DISPLAY SEPTEMBER 2016

TOURING FOR ONE MONTH IN THE TRC MOBILE LIBRARY

REQUIREMENTS:

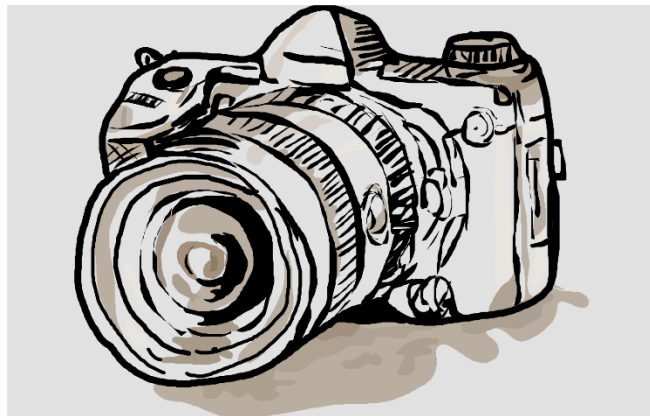
Unmounted 6x 4 print, label reverse with Name, Phone No., & kids or adults and category.

Entry 50c per photo. If photos to be returned include stamped self-addressed envelope. Own photos only. Judges decision final. Photos must not have been previously entered in any competition.

SECTIONS

1. ADULTS

- a. Farm Scene
- b. Native Animal
- c. Native Bird
- d. Native Flora
- e. Weather
- f. Feral Species



2. KIDS (under 16) Any Aspect

Further information including drop off points for entries:

Jan Rankin jrsilverwolf@westnet.com.au 0746989819 Nicki Laws 0417638360

of Rural Life.